

EMCO Network Inventory

User Guide



DOCUMENTATION VERSION: 1.21

Table of contents

1	Introduction	5
2	How do I get help?	6
2.1	Tutorials	6
3	General functions	8
3.1	Using columns	8
3.2	Setting options	9
3.3	Using records	11
3.3.1	Modifying records	11
3.3.2	Deleting records	12
3.4	Tool functions	13
3.4.1	Saving scan tool results	13
3.4.2	Opening scan tool results	13
3.4.3	Merging scan tool results	14
3.4.4	Charting scan tool results	15
	Exporting charts	15
3.5	Canceling a scan	16
4	Scanning a LAN	17
4.1	Scanning via the command line	18
4.2	Machine data	19
4.2.1	Updating LAN data	20
	Fetching new machines	20
	Updating scan data	21
	Adding new machines	21
	Removing machines	22
4.2.2	Applying filters in the Machines tab	23
4.2.3	Pinging machines	24
4.3	Saving LAN data	25
4.3.1	Creating a database	25
4.3.2	Opening a database	26

4.3.3	Merging databases	26
4.3.4	Archiving databases	27
	Creating a database from an archive	28
4.4	Reporting	29
4.4.1	Generating an on-screen report	29
4.4.2	Generating a report file	29
4.4.3	Exporting to Excel	30
4.5	Scan tools	32
4.5.1	Security scanning	32
4.5.2	File version scanning	32
4.5.3	Disk scanning	33
4.5.4	Registry value lookup	34
4.5.5	Registry scanning	35
4.5.6	Counting installed applications	36
4.5.7	Customizing scan criteria	37
4.5.8	Tracking application licenses	38
4.5.9	Comparing application licenses	39
4.6	Optional tools	40
4.6.1	Using Miscellaneous Labels	40
4.6.2	Adding a tool	41
4.6.3	Excluding application titles	41
5	Contact information	43
6	End User License Agreement	44

List of figures

3.1	Filtering a column	8
3.2	Setting scan options	10
3.3	Inserting a record	11
3.4	Modifying a record	11
3.5	Saving scan tool results	13
3.6	Opening scan tool results	14
3.7	Merging scan tool results	14
3.8	Canceling a scan	16
4.1	Scanning a LAN using IP addresses	17
4.2	Viewing machine data	19
4.3	Fetching new machines via IP addresses	20
4.4	Updating scanned data via a custom date	21
4.5	Adding new machines	22
4.6	Applying an application filter	23
4.7	Pinging one machine	24
4.8	Saving LAN data	25
4.9	Creating a database	25
4.10	Opening a database	26
4.11	Merging databases	27
4.12	Archiving a database	27
4.13	Creating a database from an archive	28
4.14	Generating an on-screen report	29
4.15	Generating a PDF report	30
4.16	Exporting to Excel	31
4.17	Security scan of one machine	32
4.18	Scanning for Acrobat Reader 5	33
4.19	Disk scanning one machine	34
4.20	Searching for a registry value	35
4.21	Searching for a registry value	36
4.22	Counting installed applications	37
4.23	Customizing scan criteria	38
4.24	Reconciling application licenses	39

4.25 Comparing application licenses	39
4.26 Adding a label	40
4.27 Adding a label to a machine	40
4.28 Adding a tool	41
4.29 Excluding application titles	42

1 Introduction

EMCO Network Inventory 3.0 perform fast and comprehensive PC hardware inventory and software audits, and is the most affordable and easiest to use tool in this area on the market today. EMCO Network Inventory uses three methods to scan your network for all available machines and domains:

1. Scan your network for all available machines and domains
2. Scan your network using a range of IP addresses
3. Scan your network using a specific domain name

EMCO Network Inventory has the following features:

- Detailed information from each machine, both hardware and software (page 19)
- License tracking and reporting feature (page 38)
- Automatically fetch new machine information and update current machine information (page 9)
- Export scan data to several formats, including Excel, Access, HTML, PDF, XML, and RTF (page 29)
- Create your own customized search queries (page 37)
- Scan your network machines for password-protected screen savers and auto-logon activity (page 32)
- Scan your network machines for specific files or file extensions (page 33)
- Scan your network machines for specific registry values (page 35)
- Filter any scanned information before you export the data (page 23)

2 How do I get help?

There are a number of different options available in the application to provide help when you need it.

- **Get Live Help** - Opens a browser window which connect you to a Live Help assistant, if they are online. If no-one is online, the window displays an email support form. Click on the **Get Live Help >Get Live Help (If Available)** menu option.
- **Wizards** - There are several wizards available to help you use EMCO Network Inventory. Click on the required menu option from the **Wizards** menu.
- **Tip of the Day** - Opens a window with helpful tips. Click on the **Help >Tip of the Day** menu option.
- **Troubleshooting Tool** - Opens a browser window to the Emco site that has a troubleshooting tool available for download. Click on the **Help >Troubleshooting Tool** menu option.

This manual is designed to help you find the information you require as quickly as possible. If you are unsure how to do something or you have a problem, try the following approaches:

- **Table of contents** - The Table of contents allows you to scan through the topics that are available in a logical order. It is worth taking a few minutes and reading the Contents to familiarize yourself with the help.
- **Index** - The Index lists key words and where they appear in the help. Use the Index when you know the type of thing you are looking for but are unsure where the information might be.

2.1 Tutorials

The following tutorials are available for EMCO Network Inventory from the EMCO website:

- Top Reasons for choosing NI 3.0
- How to Export - Report Audit Data
- How to Filter Audit Data tutorial
- How to Audit Win9x Machines
- AVI tutorials available
- Charting audit data
- Audit Computers from another Domain
- What is the difference between NI 3.0 and RA 2.0
- Computers are marked with a RED icon
- Create a Custom Scan Criteria
- How to License Tracking
- Using Excluded Application Titles
- Useful .bat script to detach running OS
- Individual Export Demos

- How does NI 3.0 discover installed apps
- Comparison table for Network Inventory
- Support that Emco provides with their products
- Network Inventory 3.0 tutorial by UKWares.com
- Informations Gathered By Network Inventory 3.x
- Expand your Audit Results by using Custom Scan
- How to detect Internet Explorer version using Custom Scan
- Always the latest Stub Analyzer program files for Network Inventory 3.0
- Features of Custom Scan in Network Inventory 3.0
- Detailed document for Stub Analyzer in NI 3.0
- Moving Network Inventory 3.0 to another computer
- Exporting Data to Excel or Access
- Get list of all program installed on all machines
- How to perform Charting on Selected Machines
- Individual Exporting Data to HTML File
- Individual Exporting Data to JPG File
- Individual Exporting Data to PDF File
- Individual Exporting Data to RTF File
- Individual Exporting Data to TXT File
- Report to File
- Report to Screen

3 General functions

Certain functionality in EMCO Network Inventory is used in the same manner throughout the application. This section describes each of general functions and explains how to use them.

3.1 Using columns

EMCO Network Inventory displays its scanned data in tabular format. You can sort on these tables using a number of different criteria:

- **(All)** - Displays all items in the column.
- **(Custom...)** - Opens a filter window that allows you to set one or two filters on that column.
- **(Blanks)** - Displays only items that have no value in this column .
- **(NonBlanks)** - Displays all items that have a value in this column .
- ***item name*** - Displays only that particular item. This list is automatically created by the value of each item in the column.

To sort using columns:

1. Click on the ▼ button in the column that you want to customize.
2. Click on the required option.
3. If you clicked on the any option except **(Custom...)**, the data will now be displayed correctly in the table.

If you clicked on **(Custom...)**, click on one of the operators from the top left drop-down list and enter the appropriate value in the right-hand field. You can use * as a wildcard.

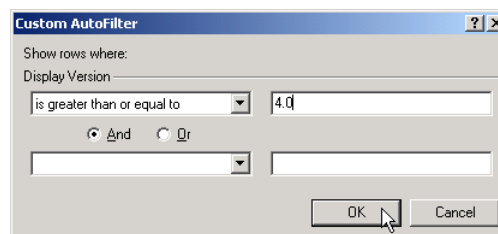
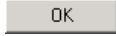


Figure 3.1: Filtering a column

4. Repeat the previous step for the bottom two fields and click on either the **And** or **Or** radio button, if required.
5. Click on the  button. The data will now be displayed correctly in the table.

3.2 Setting options

The main EMCO Network Inventory window and all of the **Tools** menu windows have an **Options** tab.

EMCO Network Inventory Options

- **Include Options** - Allows you to choose what basic information is accumulated in scans. WMI Info refers to the machine serial number, machine vendor name, and physical memory of the machine being scanned.
- **Multi-Row data** - Allows you to choose what data to include in the scan.
- **Custom Logon** - Allows you to use a particular login name and password on all machines. Useful for gaining administrator rights to all machines on the network.
- **Auto Fetch** - Activates the fetch function automatically after a set period. You can set how often the fetch occurs and what provider and domain it accesses. Refer to page 20 for more information about the update function.
- **Auto Update** - Activates the update function automatically after a set period. Refer to page 21 for more information about the update function.

Security Scanning Options

- **Custom Logon** - Allows you to use a particular login name and password on all machines. Useful for gaining administrator rights to all machines on the network.

File Version Options

- **Custom Logon** - Allows you to use a particular login name and password on all machines. Useful for gaining administrator rights to all machines on the network.

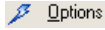
Disk Scanning Options

- **Custom Logon** - Allows you to use a particular login name and password on all machines. Useful for gaining administrator rights to all machines on the network.

Registry Value Lookup Options

- **Custom Logon** - Allows you to use a particular login name and password on all machines. Useful for gaining administrator rights to all machines on the network.

To set options:

1. Click on the  **Options** tab in the required window.
2. Click on the required tick boxes to set your options, as described above. These options will apply the next time you scan the LAN or use any of the tools.



- Include Options			
- Basic Info		<input checked="" type="checkbox"/>	
Use WMI for Physical Memory		<input type="checkbox"/>	
Description		<input checked="" type="checkbox"/>	
WMI Info		<input checked="" type="checkbox"/>	
- Multi-Row data			
Installed Apps		<input checked="" type="checkbox"/>	
Shares		<input checked="" type="checkbox"/>	
Printers		<input checked="" type="checkbox"/>	
Drive Mappings		<input checked="" type="checkbox"/>	
Disk Info		<input checked="" type="checkbox"/>	
Startup Commands		<input checked="" type="checkbox"/>	
Program Files		<input checked="" type="checkbox"/>	
Custom Scan		<input type="checkbox"/>	
Processors		<input checked="" type="checkbox"/>	
- Custom Logon			
Active		<input type="checkbox"/>	
User Name			
Password			
- Auto Processing			
- Auto Fetch			
Active		<input type="checkbox"/>	
Interval	Frequency	1	minutes
Provider			
Domain			
- Auto Update			
Active		<input checked="" type="checkbox"/>	
Interval	Frequency	5	minutes

Figure 3.2: Setting scan options

3.3 Using records

In several areas of EMCO Network Inventory you can add, modify, or delete records to the displayed data set. This allows you to make custom additions and alterations to the scanned data that EMCO Network Inventory provides.

To insert a record:

1. Click on the  button in the required area.
2. Fill in any of the displayed fields. All fields are optional.
3. Click on the  button. The record has now been added to the table.

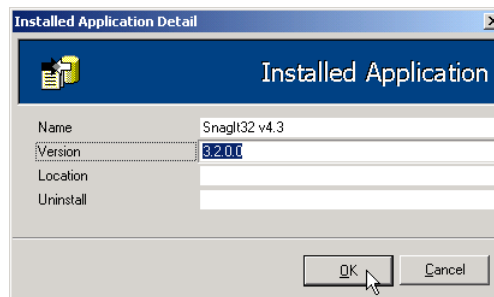

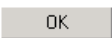


Figure 3.3: Inserting a record

3.3.1 Modifying records

You can modify records in the displayed data set in several areas of EMCO Network Inventory.

To modify a record:

1. Click on the  button in the required area.
2. Alter any of the displayed fields. All fields are optional.
3. Click on the  button. The record has now been modified in the table.

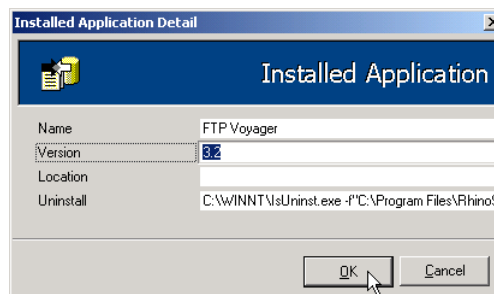

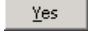


Figure 3.4: Modifying a record

3.3.2 Deleting records

You can delete records in the displayed data set in several areas of EMCO Network Inventory.

To delete a record:

1. Click on the  button in the required area.
2. Click on the  button in the **Delete** dialog box.

3.4 Tool functions

There are a number of different scanning tools that allow you to view different aspects of a LAN. The following tools have the same functionality:

- Tool Functions >Security Scanning
- Tool Functions >File Version Scanning
- Tool Functions >Disk Scanning
- Tool Functions >Registry Value Lookup
- Tool Functions >Registry Scanning


Each of these windows has similar functions for saving, opening, charting, and printing results.

3.4.1 Saving scan tool results

You can save the results of using the EMCO Network Inventory scan tools as a reference file. This allows you to backup scan data, as required.

Note: None of the scans performed from the **Tools** menu influence the main database.

To save scan tool results:

1. Click on the **File >Save Status Displayed** menu option to save the highlighted record or **File >Save Status All** menu option to save all records.
2. Enter the name of the file in the **File name** field in the required location and click on the  button.

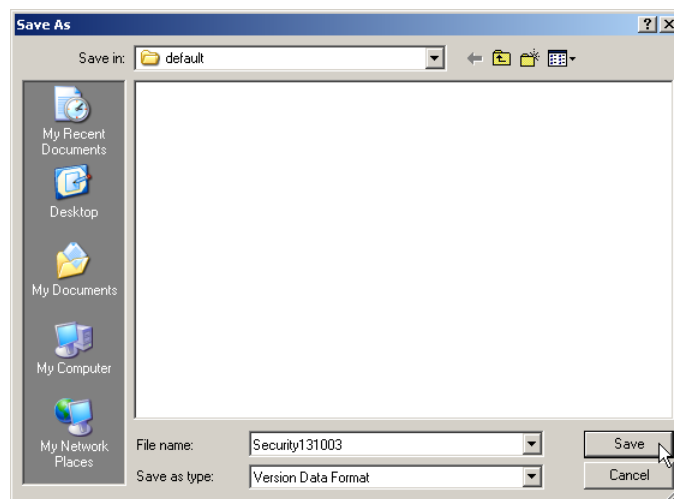



Figure 3.5: Saving scan tool results

3.4.2 Opening scan tool results

You can open data from saved scan tool files at any time.

To open scan tool results:

1. Click on the **File >Open Status File** menu option.
2. Click on the required status file and click on the  button.

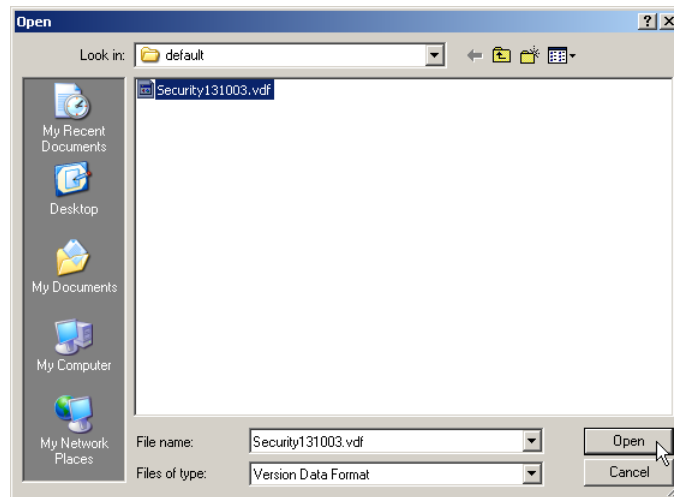



Figure 3.6: Opening scan tool results

3.4.3 Merging scan tool results

You can merge the current results from your scan with another saved file, if required.

To merge scan tool results:

1. Click on the **File >Merge Status File** menu option.
2. Click on the required status file and click on the  button.

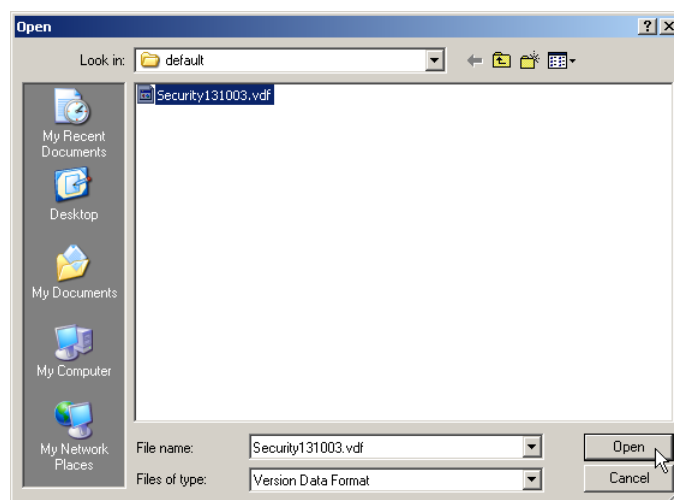
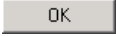


Figure 3.7: Merging scan tool results

3.4.4 Charting scan tool results

You can chart your scan tool results in a wide variety of charts, including pie, bar, and line charts, and print the results, if required.

To chart scan tool results:

1. Click on the **Chart** menu heading.
2. Click on the column that you want to chart and click on the  button.
3. The column you have chosen is displayed in bar chart format by default. Click on the **Chart Type** menu to choose from a wide variety of different charts.


You can print the chart using the **Print** menu. Refer to page 15 if you need to export the chart to a file.

Exporting charts

You can export chart data in the following formats:

- Text
- HTML
- XML
- Excel
- Bitmap

To export charts:

1. Click on the **File >Export Data** menu option if you need to save the chart in a non-graphical format (text, HTML, XML, or Excel). Click on the **File >Save to Bitmap** menu option if you need to save the chart in a graphical format (bitmap).
2. Choose the file type from the **Save as type** drop-down list, if required.
3. Enter the name of the file in the **File name** field in the required location and click on the  button.


3.5 Canceling a scan

You can cancel a scan, either in the EMCO Network Inventory main window or in any of the Tool functions (refer to page 13 for more information).

Note: You have two options when canceling a LAN scan:

- **Terminate - Normal** - Terminates the scan using the standard API thread function.
- **Terminate - Hard** - Terminates the scan using the Win API thread function. This may cause problems.

To cancel a scan:

1. Click on the flashing  button.

If you are canceling a scan in the main EMCO Network Inventory window, click on the required canceling option.



Figure 3.8: Canceling a scan

2. Please wait a few moments while the scan is stopped.



4 Scanning a LAN

The main function of EMCO Network Inventory is to scan a LAN and collect a wide variety of machine-specific data. This process creates a new set of data - all of the old data will be replaced for this database (refer to page 25 for more information about saving and modifying databases). The following scanning options are available:

- **Enumerate LAN** - Deletes all current data and scans the network using the selected options. All locked machines are ignored.
- **Re-Enumerate Selected** - Deletes all current data and scans the selected provider/domain of the network. All locked machines are ignored.
- **Enumerate LAN via IP Name** - Deletes all current data and scans the selected IP addresses on the network. All locked machines are ignored.
- **Enumerate LAN via Domain Name** - Scan a new domain. If an existing domain was entered then that domain's data is deleted before scanning.

Note: If a machine is not available for connection it will be displayed with a red mark.

To scan a LAN:

1. To scan the entire LAN, click on the  **Enumerate LAN** button or press F5.
2. To re-scan a provider/domain of the LAN, click on the required node in the LAN tree and click on the **Enumerate LAN >Re-Enumerate Selected** menu option.
3. To scan a part of the LAN based on provider and domain name, click on the **Enumerate LAN >Enumerate LAN via Domain Name** menu option, click on the required values in the **Provider** and **Domain/Workgroup** drop-down list, and click on the  button.
4. To scan a part of the LAN based on a range of IP addresses, click on the **Enumerate LAN >Enumerate LAN via IP Name** menu option, and click on the required values in the **Provider** and **Domain/Workgroup** drop-down list.
5. Enter the range of IP addresses in the **From** and **To** fields.

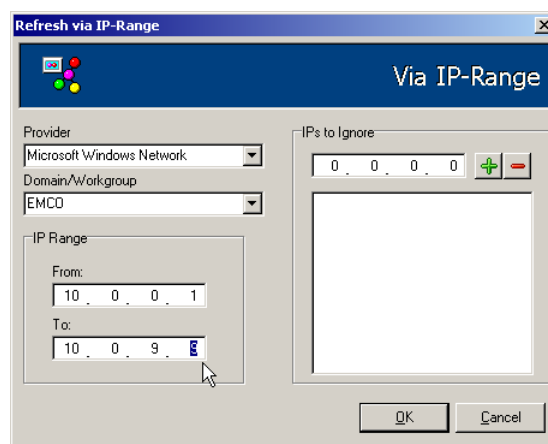



Figure 4.1: Scanning a LAN using IP addresses

6. Add one or more specific IP addresses to ignore using the **IPs to Ignore** field and the  button, if required.

7. Click on the  button.

4.1 Scanning via the command line

You can scan a network using a batch file using either the **MInfo9x.exe** or **MInfoNT.exe** stub applications included in the EMCO Network Inventory installation.

Windows NT, 2000

Use **MInfoNT.exe** located in the following directory: "%programfiles%\EMCO Network Inventory 3.0\Network Inventory Stubs". Sample batch files, which include documentation on how to use the tool, are available in the same directory.




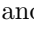






Windows 9x

Use **MInfo9x.exe** located in the following directory: "%programfiles%\EMCO Network Inventory 3.0\Network Inventory Stubs". Sample batch files, which include documentation on how to use the tool, are available in the same directory.

You can access the data created from the stub applications using either from a share called MInfo\$ share (**Load Audit Data from Network Inventory Stub ; Load from MInfo\$ Share** menu option) or straight from the files that stub creates (**Load Audit Data from Network Inventory Stub >Load From Data File(s) - Stubs Exported to File .mdx** menu option).

4.2 Machine data

The LAN scan that EMCO Network Inventory performs produces a wide variety of machine-specific data. This data is tabulated under various tabs in the main EMCO Network Inventory window. The following tabs are available:

-  **Machines** - Displays all machine names, description, the domain they belong to, and whether the machine is locked or is being automatically scanned for updates.
-  **Installed Apps** - Displays the name, version, install location, and uninstall string for all applications on that machine. This data is collected from the Registry.
-  **Shares** - Displays the name, remark, share type, and path for each share on that machine.
-  **Printers** - Displays the network, name, port, and driver of all mapped printers on that machine, and whether the printer is shared or on a remote server.
-  **Mappings** - Displays the drive letter and the path for all mapped drives on that machine.
-  **Disks** - Displays the name, available space and total space (in gigabytes), serial number, max length, any flags, and the file system being used by hard disks on that machine.
-  **Startup** - Displays the caption, command, and section for all Startup items on that machine.
-  **Program Folders** - Displays all Program Files directories and their names on that machine.
-  **Customer Scan** - Displays the name of any custom scan run on that machine. Refer to page 37 for more information about custom scans.
-  **Processors** - Displays the processing speed, manufacturer, processor, alias, and any remarks about the processor on that machine.

To view machine data:

1. Click on the required machine in the LAN tree.
2. Click on the required tab. Refer to page 8 for more information about sorting the displayed information and page 11 for more information about modifying records, if required.

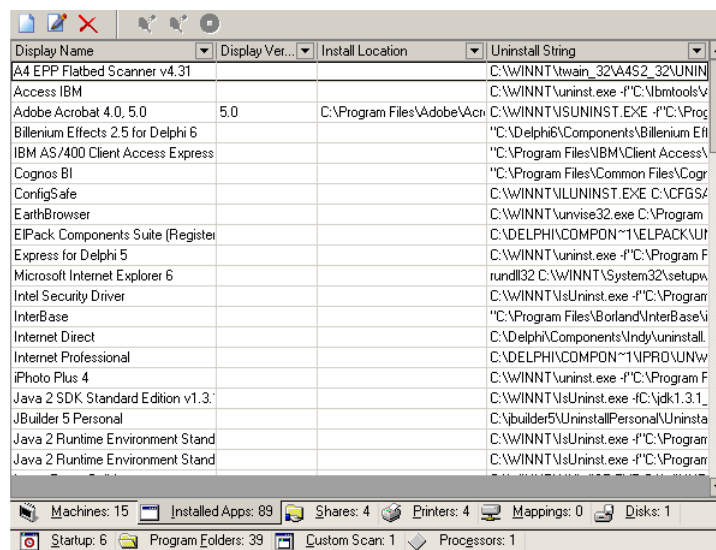


Figure 4.2: Viewing machine data

4.2.1 Updating LAN data

There are several different ways of updating LAN data:

- **Fetch** - Scans the LAN and adds new machines found to the displayed data.
- **Update** - Re-scans machines in the database based on a variety of criteria.
- **Add** - Allows you to add new machines based on the required network provider, domain, and machine name.



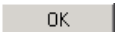
Fetching new machines

Fetch allows you to scan the LAN and adds new machines found to the displayed data. There are two different types of fetch that you can use:

- **Fetch New Machines** - Scans only machines that are not yet part of the data for the selected domain.
- **Fetch New Machines via IP Range** - Scans only machines in a certain IP range that are not yet part of the data for the selected domain.

Note: If a machine is not available for connection it will be displayed with a red mark.

To fetch new machines:

1. To scan the LAN and automatically add any new machines to the list, click on the  **Fetch New** button.
2. To scan the LAN via a range of IP addresses, click on the **Fetch New > Fetch New Machines via IP Range** menu option and click on the required values in the **Provider** and **Domain/Workgroup** drop-down list.
3. Enter the range of IP addresses in the **From** and **To** fields.
4. Add one or more specific IP addresses to ignore using the IPs to Ignore field and the  button, if required.
5. Click on the  button.

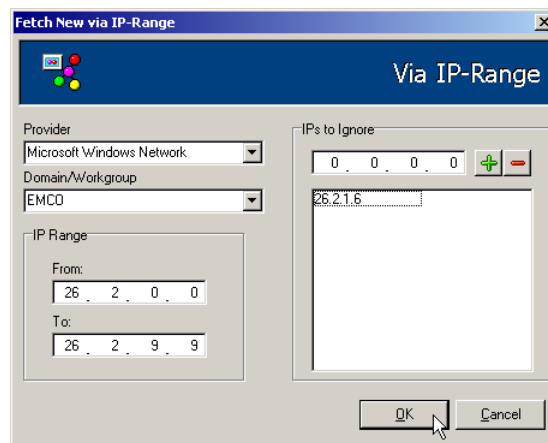


Figure 4.3: Fetching new machines via IP addresses



Updating scan data

Updating allows you to re-scan machines in the database based on a variety of criteria. There are several different update options:

- **Update** - Updates all scanned data for the entire machine tree. The updating process uses the current scanning options. If data exists in fields belonging to options NOT currently selected then this data is retained. Individual machine data can be retained by locking the machine, and individual data fields can be retained by setting them to read only.
- **Update Selected** - Updates all scanned data for the selected machines. All other details are the same as the "Update" option.
- **Update Scan Age >30 days** - Updates all scanned data for machines that have not been updated within the last 30 days. All other details are the same as the "Update" option.
- **Update Custom** - Updates all scanned data for machines that have not been updated within a chosen time period. All other details are the same as the "Update" option.

Note: If a machine is not available for connection it will be displayed with a red mark.

To update scan data:

1. To re-scan all machines in the database, click on the  **Update** button.
2. To re-scan all selected machines in the LAN tree, click on the required machines in the LAN tree (Ctrl+click allows you to select multiple machines) and click on the **Update >Update Selected** menu option.
3. To re-scan all machines in the database that have not been scanned for over 30 or more days, click on the **Update >Update Scan Age >30 days** menu option.
4. To re-scan all machines in the database that have not been scanned since a particular date, click on the **Update >Update Custom** menu option.
5. Click on the drop-down list, use the pop-up calendar to click on the required date, and click on the  **OK** button.

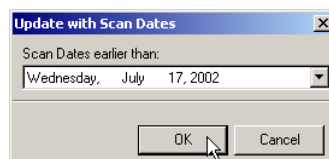




Figure 4.4: Updating scanned data via a custom date



Adding new machines

Adding opens a filter window that allows you to add new machines based on the required network provider, domain, and machine name. You can also import and export the machine name list, as required.

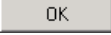
To add new machines:

1. Click on the  button in the LAN tree.
2. Click on the required options from the **Provider** and **Domain/Workgroup** drop-down lists.

3. Click on the  button.
4. Enter the machine name and description in the **Machine** and **Description** fields and click on the  button.
5. Repeat the above steps to add multiple machine names, as required.

You can export this list of machines to a text file by clicking on the  button. Similarly, you can import a list of machine names by clicking on the  button.

Note: You can generate an import file manually or using an external tool, if required. The syntax is: **Machine,Description**, where the first line must be **Machine,Description**.

6. Click on the  button to finish the procedure.

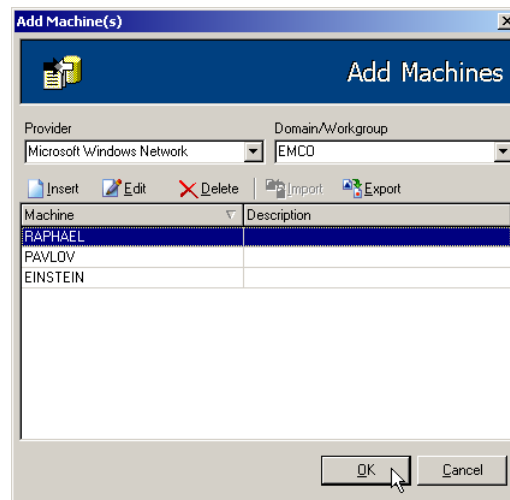

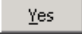

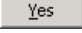


Figure 4.5: Adding new machines

Removing machines

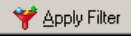






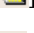
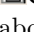


EMCO Network Inventory allows you to remove selected machines from a database. You can also wipe the entire database and start again, if required.

To remove machines from the database:


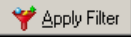
1. To remove a machine from the database, click on the machine name in the LAN tree, click on the  button.
2. Click on the  button in the **Delete** dialog box.
3. Repeat the above steps for as many machines as required.
To remove all machines from database, click on the  button in the LAN tree.
4. Click on the  button in the **Delete** dialog box.

4.2.2 Applying filters in the Machines tab

The Machines tab in the EMCO Network Inventory window has a large number of available filters for all types of scanned machine data. You can choose a type of data and the specific item to filter on and the EMCO Network Inventory window will only display those machines that have that particular item. You can only filter by one specific type of data at a time.

-  **Apply Filter** - Applies the indicated filter.
-  **Installed Apps** - Filters on installed applications.
-  **Shares** - Filters on shares.
-  **Printers** - Filters on installed printers.
-  **Mappings** - Filters on mapped drives.
-  **Disks** - Filters on disks.
-  **Startup** - Filters on startup applications.
-  **Program Folders** - Filters on Program Files directories.
-  **Customer Scan button** - Filters on custom scan criteria. Refer to page 37 for more information about custom scans.
-  **Processors** - Filters on machine processors.
-  **Disconnected Machines** - Filters on disconnected machines.

To apply filters in the Machines tab:

1. Click on the required icon in the vertical column on the right side of the Machines tab.
2. Click on the  button in the column that you want to filter on.
3. Click on the required item in the column (refer to page 8 for more information about using columns).
4. Click on the . The LAN tree and all tabs will now only display data for those machines that match the filter.

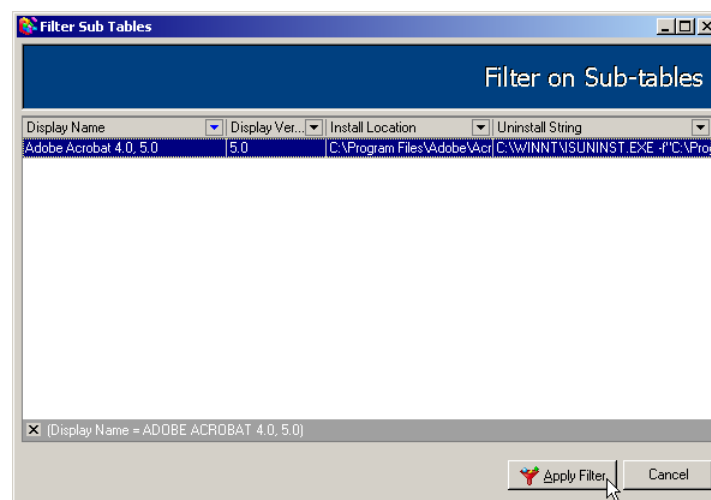






Figure 4.6: Applying an application filter

5. To remove a filter, click on the flashing  button.

4.2.3 Pinging machines

You can ping disconnected machines directly from the EMCO Network Inventory application. You can ping all selected machines or all machines, as required.

To ping one or more machines in the LAN:

1. Click on the  icon in the vertical column on the right side of the Machines tab.
2. Click on the  button to ping all selected machines or the  button to ping all machines.

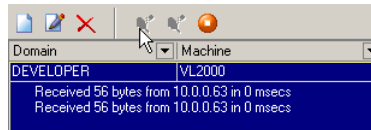



Figure 4.7: Pinging one machine

You can click on the  button to stop ping at any time.

To remove the filter, click on the flashing  button.

4.3 Saving LAN data

You can save scanned data to a database if you need to keep the data for further reference. If you do not explicitly save the data to a new database, the data is automatically saved as the "default" database. The path for databases, should you need to transfer databases between machines, is at the following location: **C:\Program Files\EMCO Network Inventory 3.0\Data\MachineData**.

Note: Whenever you scan a LAN you are automatically saving new information to whatever database you are using. This can overwrite information that you may not want to change. Refer to page 27 if you want to archive a database so that you can always create a new database from the archive.

To save LAN data:

1. Click on the **File >Save Database As** menu option.
2. Enter the name of the database in the **Save Database As** window and click on the **OK** button. This will create a folder of the same name in the **C:\Program Files\EMCO Network Inventory 3.0\Data\MachineData** directory.

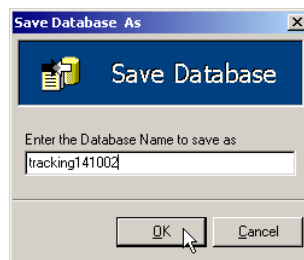


Figure 4.8: Saving LAN data

4.3.1 Creating a database

You can create a database on EMCO Network Inventory in two ways:

1. Scan a LAN and then save the results to a new file (refer to page 25 for more information).
2. Create a new database, then scan the LAN. This method is described in this topic.

To create a database:

1. Click on the **File >New** menu option.

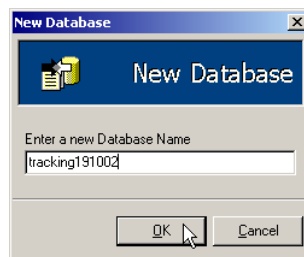
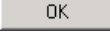


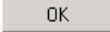
Figure 4.9: Creating a database

2. Enter the name of the database in the available field and click on the  button.
3. You can now scan the LAN as required (refer to page 25 for more information). The results will automatically be saved.

4.3.2 Opening a database

You can open an existing database at any time. If you are transferring a saved database between machines, you will need to copy the database folder to the following location: **C:\Program Files\EMCO Network Inventory 3.0\Data\MachineData**. You can also use the archive function, refer to page 27 for more information.

To open a database:

1. Click on the **File >Open Database** menu option.
2. Click on the required option from the drop-down list and click on the  button. The database data is now displayed in the LAN tree.

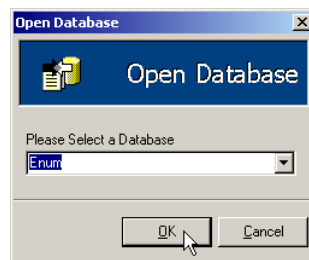


Figure 4.10: Opening a database

4.3.3 Merging databases

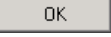
You can merge two databases together, if required. There are three available options on what to do when EMCO Network Inventory encounters the data with the same identification:

- **Skip On Collision** - Do not merge that particular record from the selected database into the current database.
- **Merge using TimeStamp** - Merge that particular record but assign it it's own time stamp information.
- **Overwrite Existing** - Overwrite the existing record in the current database with the record from the selected database.

You can also merge databases from RemoteAudit 2.0 (an older version of the EMCO Network Inventory application). There are no options available on how to handle RemoteAudit 2.0 data with the same identification.

To merge a database:

1. Click on the **File >Merge >From Database** or **File >Merge >From RemoteAudit 2.0** menu option.

2. If you are merging a EMCO Network Inventory database, click on the required database from the drop-down list, click on the required radio button to handle identical data, and click on the  button.

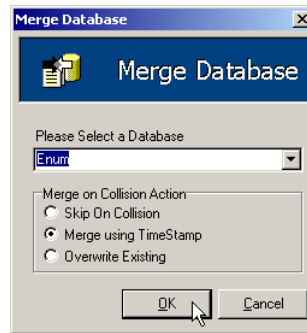
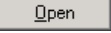


Figure 4.11: Merging databases


If you are merging a RemoteAudit 2.0 database, locate required database and click on the  button.

3. The two databases have now been merged and the data is displayed in the LAN tree.

4.3.4 Archiving databases

Archived databases allow you to create new databases, based on the archive data, at any time. There is no danger of changing information in the archive by re-scanning the LAN.

To archive a database:

1. Click on the **File > Archiving > Archive Current Database** menu option.
2. Enter the name of the file in the **File name** field in the required location and click on the  button.

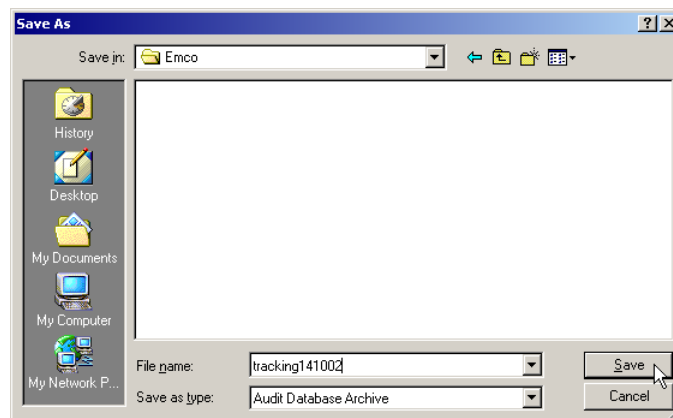


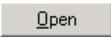
Figure 4.12: Archiving a database

Creating a database from an archive

You can create a new database from an existing archive at any time.

Note: You can not create a new database that has the same name as a current database. If you need to delete a current database and start again, you need to delete the required folder in the following location:
C:\Program Files\EMCO Network Inventory 3.0\Data\MachineData\.

To create a database from an archive:

1. Click on the **File > Archiving > New Database From Archive** menu option.
2. Locate the required archive file (.adax file) and click on the  button.

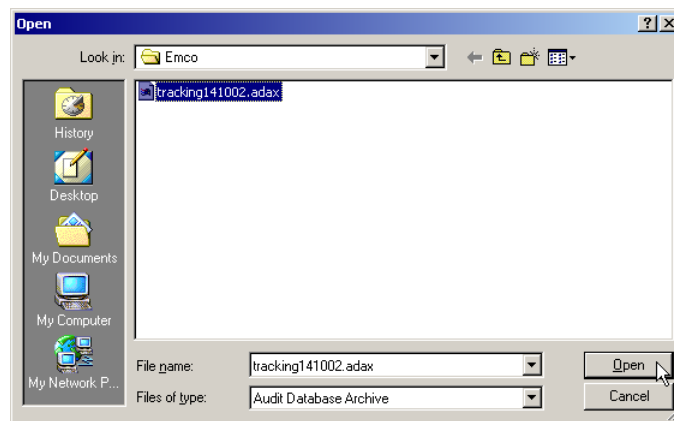


Figure 4.13: Creating a database from an archive

4.4 Reporting


There are several different ways you can generate reports in EMCO Network Inventory. The following functions are available:

- **Reporting to the screen** - Generates a report that is available for immediate printing to hardcopy.
- **Reporting to a file** - Generates a report file in a variety of different formats.
- **Export to Excel** - Generates an Excel report.

4.4.1 Generating an on-screen report

You can generate a report that is available for immediate printing to hardcopy. You can choose what information you want to include in the report. This does not save the report in an electronic format - refer to page 29 if you need to do this.

To generate an on-screen report:

1. Click on the **File >Report All >To Screen** menu option.
2. Untick areas that you do not want to include in the report in the **Field Output Selection** window and click on the button.
3. Use the buttons at the top of the window to view the report onscreen. Click on the  button to print report, if required.

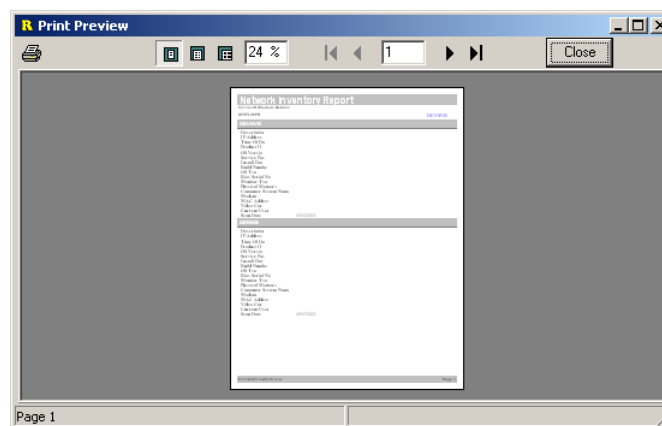


Figure 4.14: Generating an on-screen report

4.4.2 Generating a report file

You can generate a report file in a variety of different formats. The following formats are available:

- **Plain text** - One .txt file.
- **PDF** - One .pdf file.
- **HTML** - Each computer and tab is a separate .html page.
- **RTF** - One .rtf file.

- **JPEG** - Each computer and tab is a separate .jpg file.
- **Access database** - One .mdb file.

You can choose what information you want to include in the report. This does not allow you to print the report immediately - refer to page 29 if you need to do this.

To generate a report file:

1. Click on the **File >Report All >To File** menu option.
2. Untick areas that you do not want to include in the report in the **Field Output Selection** window and click on the button.
3. Choose the file type from the **Save as type** drop-down list, enter the name of the file in the **File name** field in the required location and click on the button.

File generation may take a few moments, depending on the size of the database.

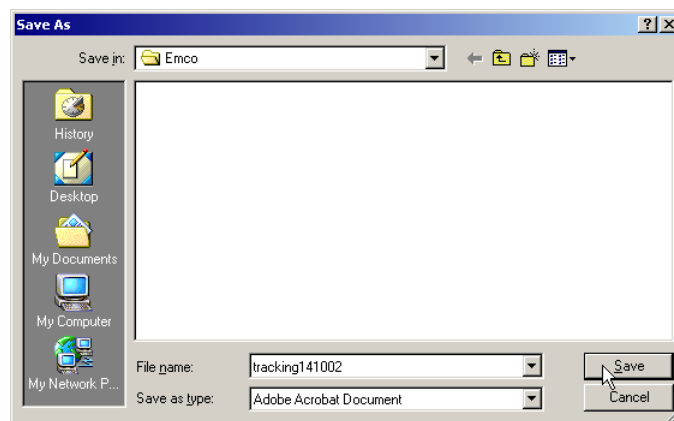


Figure 4.15: Generating a PDF report

4.4.3 Exporting to Excel

You can generate an Excel file of any or all of the scanned LAN data.

To export to Excel:

1. Click on the **File >Export All** menu option.
2. Untick areas that you do not want to include in the report in the **Field Output Selection** window and click on the button.
3. Enter the name of the file in the **File name** field in the required location and click on the button.

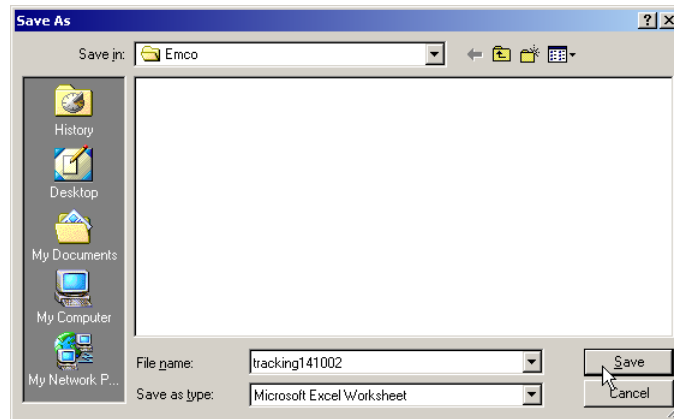


Figure 4.16: Exporting to Excel

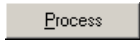
4.5 Scan tools

There are a number of specialized scan tools available that can scan for a wide variety of different information about a LAN. This section describes how to use these tools.

4.5.1 Security scanning

EMCO Network Inventory enables you to scan for a variety of security-based information, including user name, password, any auto-login activity, any password protected screensavers (including the screensaver timeout and filename), domain, and machine name. You can chart or export any piece of information, as required.

To use security scanning:

1. Click on the **Tool Functions >Security Scanning** menu option.
2. Drag and drop the required machines or domains from the LAN tree on the left to the **Processing Queue** tab on the right.
3. Click on the  button.
4. The results are now displayed in the **Status** tab. You can save, chart, or export these results, if required (refer to page 13 for more information).

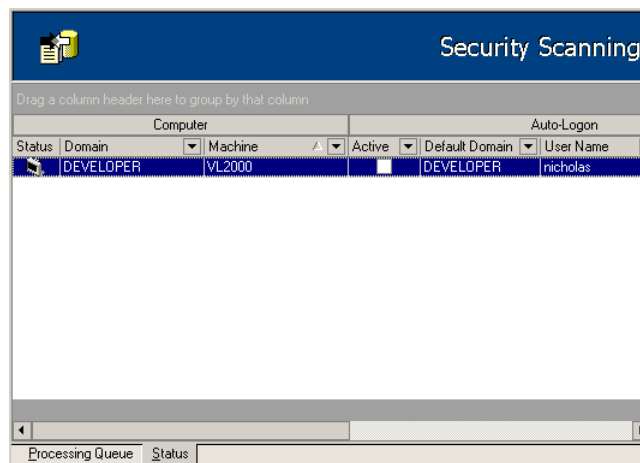




Figure 4.17: Security scan of one machine

4.5.2 File version scanning

EMCO Network Inventory enables you to search for specific applications. The scan data includes version numbers and file size of the found applications. This is useful when you are searching for any known file, such as a specific application or virus file.

To use file version scanning:

1. Click on the **Tool Functions >File Version Scanning** menu option.
2. Drag and drop the required machines or domains from the LAN tree on the left to the **Processing Queue** tab on the right.

- Click on the  or  button to find the file that you want to search for.

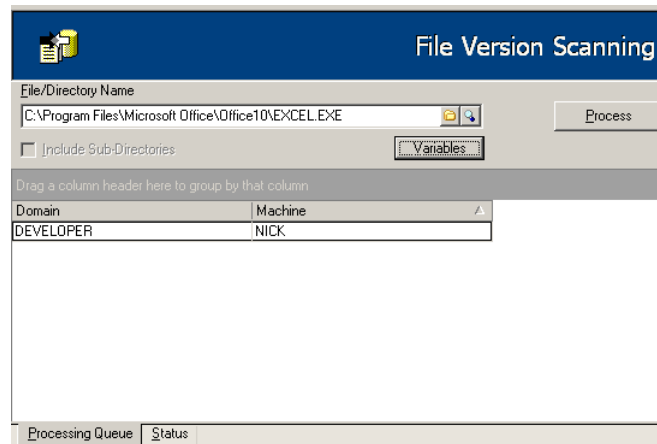
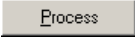


Figure 4.18: Scanning for Acrobat Reader 5

- Click on the  button.
- The results are now displayed in the **Status** tab. You can save, chart, or export these results, if required (refer to page 13 for more information).

4.5.3 Disk scanning

Disk scanning enables you to search for particular types of files across entire machines. You can choose what disks to search on in specific machines.

To use disk scanning:

- Click on the **Tool Functions > Disk Scanning** menu option.
- Drag and drop the required machines or domains from the LAN tree on the left to the **Processing Queue** tab on the right.
- Enter the types of files to search for in the **File Mask** field.
- Double-click on each machine in the **Processing Queue** tab to indicate which drives to scan on that machine. To set drives on all machines at once, right-click on a machine and click on the **Set Drives on all machines** option.

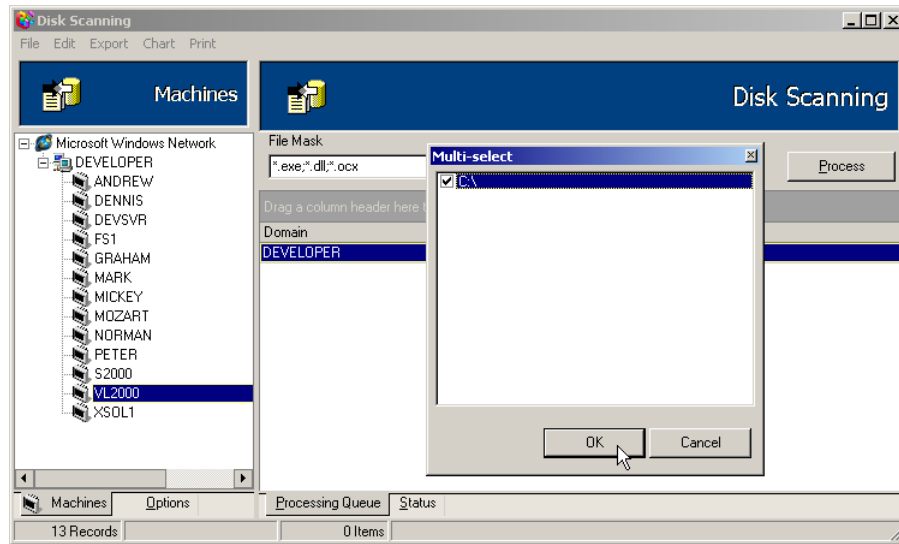


Figure 4.19: Disk scanning one machine

5. Click on the **Process** button.
6. The results are now displayed in the **Status** tab. You can save, chart, or export these results, if required (refer to page 13 for more information).

4.5.4 Registry value lookup

EMCO Network Inventory enables you to search the registry of any LAN machines for a particular key value and have it displayed. If you do not know the exact key value that you are searching for, use the broader Registry Scanning feature for more information (refer to page 35 for more information).

To use registry value scanning:

1. Click on the **Tool Functions > Registry Value Lookup** menu option.
2. Drag and drop the required machines or domains from the LAN tree on the left to the **Processing Queue** tab on the right.
3. Click on the registry root from the **Root** drop-down list.
4. Enter the path for the registry value in the **Path** field and the value of the entry in the **Value** field.

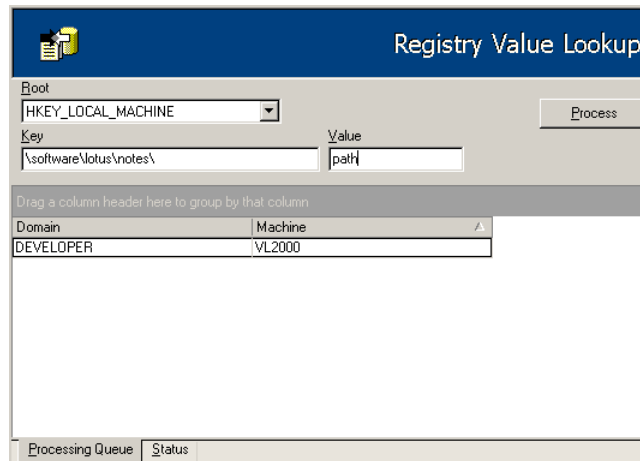



Figure 4.20: Searching for a registry value



5. Click on the  button.
6. The results are now displayed in the **Status** tab. You can save, chart, or export these results, if required (refer to page 13 for more information).

4.5.5 Registry scanning

EMCO Network Inventory enables you to search the registry of any LAN machine for a key, value, or even data. You can choose which root keys to include, whether it has to be an exact match or not, and whether the search string is a key, a value, or data (or any combination).

If you only need to search for a particular key value, and you know what that value is, the Registry Value Lookup feature is more useful (refer to page 34 for more information).

To use registry scanning:

1. Click on the **Tool Functions >Registry Scanning** menu option.
2. Drag and drop the required machines or domains from the LAN tree on the left to the **Processing Queue** tab on the right.
3. Click on the  **Add** button
4. Click on the type of keys to search for in the tick boxes in the **RootKeys** area and indicate whether the search is case sensitive or not.
5. Indicate what type of data to search for in the **Scope** area and what type of search to perform in the **Match Type** area.
6. Enter the key and string to search for in the **Key** and **Search String** fields and click on the  button.

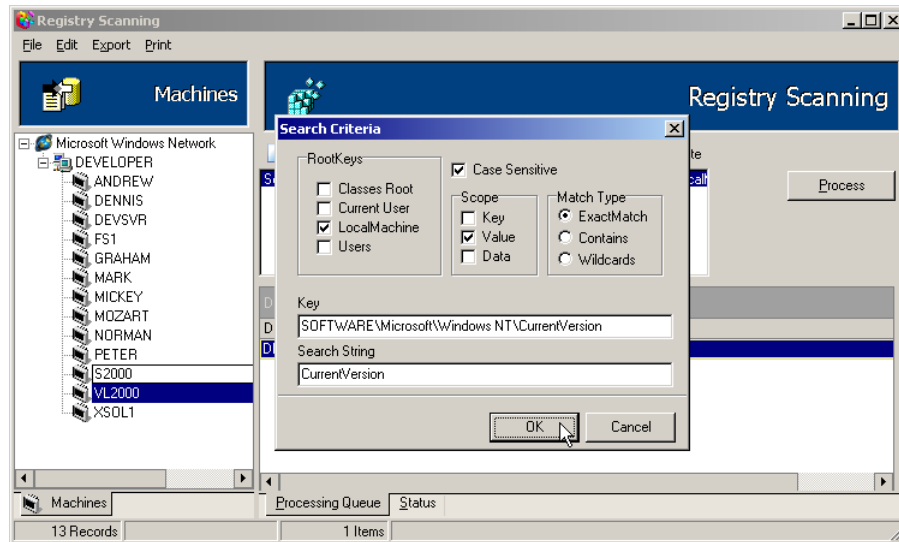


Figure 4.21: Searching for a registry value

7. Click on the **Process** button.
8. The results are now displayed in the **Status** tab. You can save, chart, or export these results, if required (refer to page 13 for more information).

4.5.6 Counting installed applications

You can count the number of each application that is installed on the network. You can view a subset of the data using the columns and generate a chart or a report of the final results.

To count installed applications:

1. Click on the **Tool Functions > Installed Application Count** menu option.
2. Click on the **Count Applications** button to count all scanned applications. Click on the **Include Custom Scan Data** tick box if you want to include applications that were scanned using a custom scan.
3. You can sort the using columns, as required (refer to page 8 for more information).

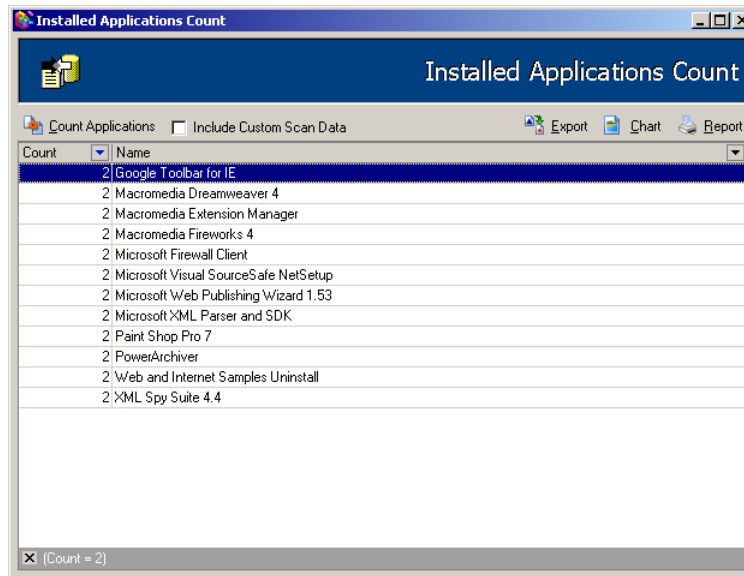


Figure 4.22: Counting installed applications

4. You can export, chart, or generate a report of the counted applications using the **Export**, **Chart**, or **Report** buttons. Refer to page 15 for more information about using the charting function.

4.5.7 Customizing scan criteria

EMCO Network Inventory enables you create custom scans that can search for particular files, registries, or services on LAN machines. This enables you to create scan information on files which are particularly important for your specific LAN.

To customize scan criteria:

1. Click on the **Custom Search Queries > Custom Scan Criteria** menu option.
2. Click on the one of the options in the **Insert** menu.
3. Enter the display name of the scan in the **Display Name** field. For ease of reference make sure that this is a meaningful title.
4. Enter the path to the file name in the **File Name** field.
5. If you need the filename to match existing application version, click on the **Match** tick box and enter the version information in the Version field (the button will auto-populate this field with existing version information).
6. Repeat the above steps as many times as required.

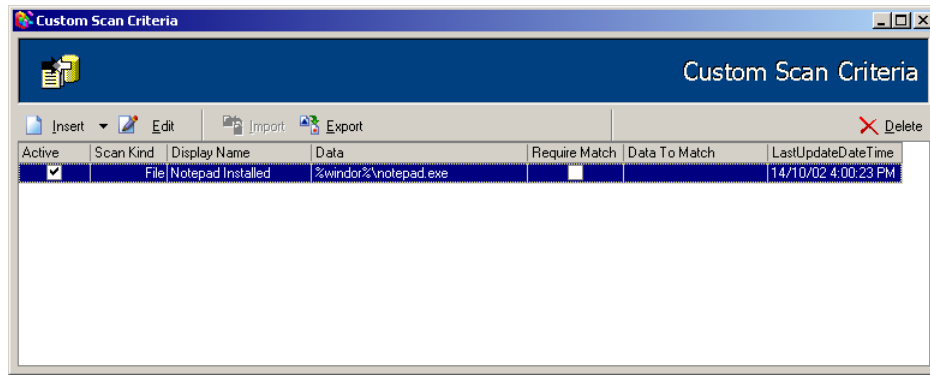


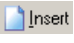
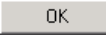


Figure 4.23: Customizing scan criteria

7. You can export or import custom scan files (.csc), if required. To view Customized Scan data obtain from command line scans (refer to page 18 for more information), export a file as Default.csc to the Data subfolder below **C:\Program Files\Emco Network Inventory 3.0**.
8. Make sure the **Custom Scan** option is ticked (check in the Options tab in the main EMCO Network Inventory window - refer to page 9 for more information.). From now on, all scans (including fetch and update functions) will include the entered applications (refer to page 17 for more information about scanning).

4.5.8 Tracking application licenses

EMCO Network Inventory enables you to enter the number of available licenses that you have for one or more applications and produce a report that displays the total number of licenses that are currently installed in the LAN.

To reconcile application licenses:

1. Click on the **License Functions >License Tracking - (Reconcile Licenses)** menu option.
2. Click on the  **Insert** button.
3. Click on the required application from the **Application Title** drop-down list and enter the number of licenses that you have for that application in the **Licenses** field.
4. Click on the  **OK** button.
5. Repeat the above steps as many times as required to enter multiple applications.
6. Click on the  **Reconcile** button to generate a reconciled license report.
7. Use the buttons at the top of the window to view the report onscreen. Click on the  button to print report, if required.

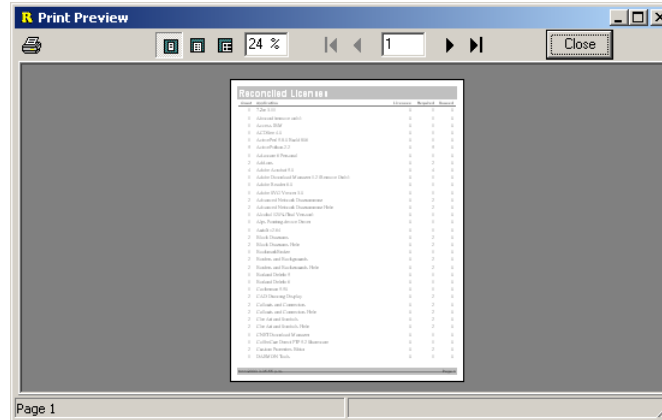


Figure 4.24: Reconciling application licenses

4.5.9 Comparing application licenses

EMCO Network Inventory enables you to compare scanned applications between the current database and another database and generate a printable report comparing the number of licenses available for each application. This allows you to observe any changes that may have occurred in licenses between networks or at different times on the same network.

To compare application licenses:

1. Click on the **License Functions > Compare Licenses** menu option.
2. Click on the required database from the available drop-down list.
3. A report comparing licenses has been automatically generated. You can preview the report online as well as print it, if required.

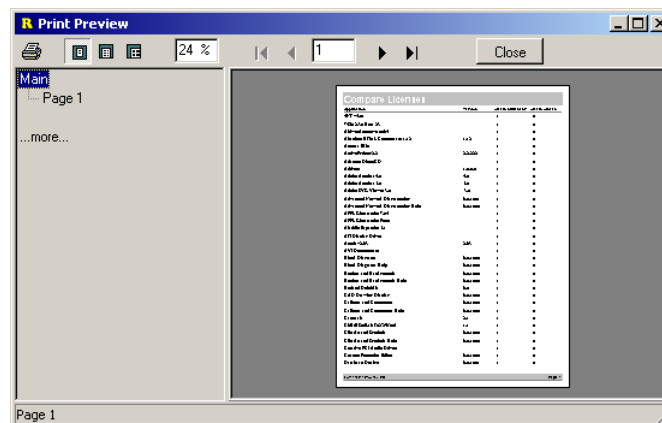


Figure 4.25: Comparing application licenses

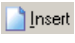

4.6 Optional tools

EMCO Network Inventory has a number of features available from the **Option** menu. These functions are described in this section.

4.6.1 Using Miscellaneous Labels

The Miscellaneous Labels function allows you to create labels, with attached notes, that can be used on any scanned machines.

To use Miscellaneous Labels:

1. To set up the labels that you want to use, click on the **Options > Miscellaneous Labels** menu option.
2. Click on the  button to add a label.
3. Enter the name of the label in the **Display Label** field and click on the  button.

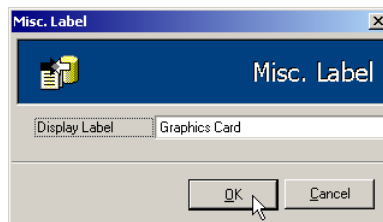




Figure 4.26: Adding a label

4. When you need to use a label, click on the machine that you want to add the label to.
5. Click on the  button in the Miscellaneous area.
6. Click on the required label from the **Label** drop-down list.
7. Enter the note attached to this label in the **Data** field.
8. Click on the  button. The label and note are now displayed for that machine.

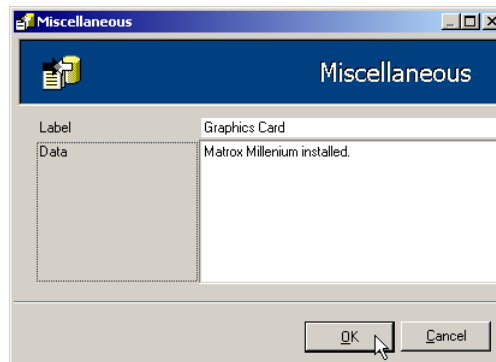




Figure 4.27: Adding a label to a machine

4.6.2 Adding a tool

You can add links to useful applications into EMCO Network Inventory's right-click menu. You can quickly access these tools from the right-click menu at any time.

To add a tool:

1. Click on the **Options >Configure Tools** menu option.
2. Click on the  button to add an application.
3. Enter the label you want for the application in the **Name** field and the path to the application in the **CommandLine** field.
4. Click on the  button.

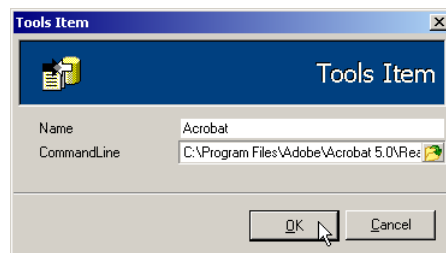


Figure 4.28: Adding a tool



5. You can now access the application from the right-click **Tools** menu in the machine tree.

4.6.3 Excluding application titles

You can exclude one or more particular applications from the general LAN. The next time you re-scan the LAN the applications on this list will not be displayed.

Note: Applications are **not** uninstalled from the machine, only removed from the scanned database.

To exclude application titles:

1. Click on the **Options >Excluded Application Titles** menu option.
2. Click on the  button.
3. Click on the required application from the **Application Title** drop-down list and click on the  button.
4. Repeat the above steps as many times as required to enter multiple applications.

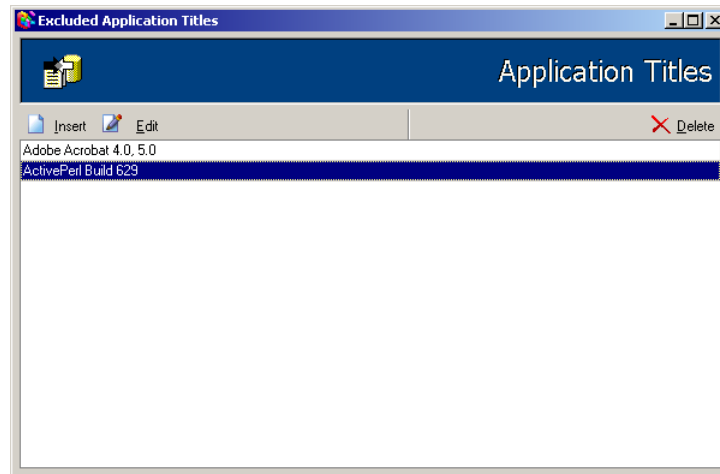


Figure 4.29: Excluding application titles

5. Close the **Excluded Application Titles** window. From now on, all scans (including fetch and update functions) will exclude the entered applications (refer to page 17 for more information about scanning).

5 Contact information

Company Profile:

- **Company name:** EMCO Software Ltd.
- **Address:** Bildshofda 14.
- **City:** Reykjavik.
- **Country:** Iceland.
- **Postal code:** 110.
- **Tel:** +354 6594664
- **Fax:** +354 568 0022.
- **E-mail:** emco@emco.is
- **Website:** <http://www.emco.is/>

We at EMCO gratefully accept all comments and suggestions.

- **Information:** info@emco.is
- **Sales:** sales@emco.is
- **Technical Support:** support@emco.is

6 End User License Agreement

EMCOTM Network Inventory

Copyright (c) 2001-2002 EMCO - All Rights Reserved.

End User License Agreement for EMCO Network Inventory Software

IMPORTANT-READ CAREFULLY: This EMCO Network Inventory End-User License Agreement ("Agreement") is a legal agreement between you (either an individual or a single entity) and EMCO for the EMCO Network Inventory software product identified above, which includes computer software and may include associated media, printed materials, and "online" or electronic documentation ("Software Product"). By installing, copying, or otherwise using the Software Product, you agree to be bound by the terms of this Agreement. If you do not agree to the terms of this Agreement, you may not install or use the Software Product; you may, however, return it to your place of purchase for a full refund.

The Software Product is owned by EMCO and is protected by copyright laws and international copyright treaties, as well as other intellectual property laws and treaties.

1. GRANT OF LICENSE. EMCO grants you (the original end-user and any subsequent transferee of the Software Product as permitted below) a non-exclusive license to put in use by a person or organization that agrees to be bound by the terms of this Agreement, one copy of the Software Product.
2. (a) Installation. You may install one copy of the Software Product on one Client Device (defined as, any computer, workstation, personal digital assistant, pager, "smart phone" or other digital electronic device for which the software was designed and on which software may be used by an end user in client-mode).
- (b) Use. You may use one copy of the Software Product on one Client Device (except as may be specifically provided below). The Software Product is "in use" when it is loaded into the temporary memory (i.e., RAM) or installed into the permanent memory (e.g., hard disk, CD ROM, ROM or other storage device) of a Client Device for the purpose of being accessible in client-mode by one end user. (If you wish to use the Software Product on a computer or workstation in server-mode within a multi-user or networked environment, then you must obtain a server-mode license from EMCO, which will require, among other things, that you license one copy of the Software Product for each Client Device or end user "Seat" which is participating in such an environment and which has access to the Software Product).
- (c) Volume Licenses. If this package is a volume license package (such as a "corporate license" or a "corporate bundle"), you may make and use additional copies of the Software Product up to the number of copies authorized in this package or in your corporate license agreement, or otherwise indicated at the time of purchase. If the anticipated number of users of the Software Product can exceed the number of applicable licenses, then you must have a reasonable mechanism or process in place to ensure that the number of persons using the Software Product does not exceed the number of licenses you have obtained.
- (d) Upgrades and Support. If this Software Product is labeled as an upgrade or trade-up from a prior version of a EMCO's product that you were properly licensed to use, EMCO grants you the right to put in use either the current or prior version of the Software Product, and any prior version license is replaced by this Agreement. EMCO or EMCO's authorized software vendor may provide you with technical support services relating to the Software Product according to EMCO's standard support policies and procedures, which may be described in the user manual, in "on line" documentation and/or other materials provided by EMCO or posted on EMCO's web site ("Support Services"). Any supplemental software code provided to you as part of the Support Services shall be considered part of the Software Product and subject to the terms and conditions of this Agreement. With respect to technical information you provide to EMCO as part of the Support Services, EMCO may use such information for its business purposes, including for product support and development. EMCO will not utilize such technical information in a form that personally identifies you.

- (e) Dual Media Software and Multiple Platform Versions. If the package from which you obtained this Software Product contains more than one medium (e.g., both 3 1/2" disks and a CD), you may use only the medium appropriate to your computer. You may not use the other disk(s) on another computer or loan, rent, lease, or transfer them to another user except as permitted under this Agreement or as part of the permanent transfer (as provided above) of all the Software Product and related materials. If the CD or disk(s) on which the Software Product resides contains several copies of the Software Product, each of which is compatible with a different operating system or platform architecture (such as Windows9x/20xx/NT, Macintosh, one or more versions of Unix, the x86 architecture, or various RISC architectures), then you may install the Software Product for use with only one of those architectures and you may not use the other version(s) on another computer or loan, rent, lease, or transfer them to another user except as permitted under this Agreement or as part of a permanent transfer (as provided above).
 - (f) Other Restrictions. The original of this Agreement is your proof of license to exercise the rights granted herein and must be retained by you. You may not rent or lease the Software Product, but you may transfer your rights under this Agreement on a permanent basis provided you transfer this Agreement and all copies of the Software Product, including all accompanying printed materials, you do not retain any copies of the Software Product or such materials, and the recipient agrees to be bound by the terms of this Agreement. Any transfer of the Software must include the most recent update and all prior revisions. You may not reverse engineer, decompile, disassemble or otherwise translate the Software Product, except and only to the extent that such activity is expressly permitted by applicable law notwithstanding this limitation. If this Software Product is labeled "Evaluation Copy," "Not For Resale," "NFR" or to any of those effects, this license only permits use for demonstration, test, or evaluation purposes.
3. COPYRIGHT. The Software Product is licensed, not sold. All right, title and interest in the Software Product (including any images, "applets," photographs, animations, video, audio, music, and text incorporated into the Software Product), accompanying printed materials, and any copies you are permitted to make herein, are owned by EMCO or its suppliers, and the Software Product is protected by Icelandic copyright laws and international treaty provisions. Therefore, you must treat the Software Product like any other copyrighted material (e.g., a book or musical recording) except that you may either (a) make a reasonable number of copies of the Software Product solely for backup or archival purposes or (b) transfer the Software Product to a single hard disk, provided you keep the original solely for backup or archival purposes. Such copy shall include EMCO 's copyright and other proprietary notices. You may not copy the printed materials accompanying the Software Product.
4. TERMINATION. This Agreement will immediately and automatically terminate without notice if you fail to comply with any term or condition of this Agreement. You agree upon termination to promptly destroy the Software Product together with all of its component parts, prior and replacement versions, and all copies, modifications and merged portions thereof in any form.
5. LIMITED WARRANTY.
6. (a) Limited Warranty. EMCO warrants that the Software Product will perform substantially in accordance with the accompanying written materials for a period of thirty (30) days from the date of original purchase. To the extent allowed by applicable law, implied warranties on the Software Product, if any, are limited to such thirty (30) day period. Some jurisdictions do not allow limitations on duration of an implied warranty, so the above limitation may not apply to you.
- (b) Customer Remedies. EMCO 's and its suppliers' entire liability and your exclusive remedy shall be, at EMCO 's option, either (a) return of the purchase price paid for the license, if any or (b) repair or replacement of the Software Product that does not meet EMCO 's limited warranty and which is returned at your expense to EMCO with a copy of your receipt. This limited warranty is void if failure of the Software Product has resulted from accident, abuse, or misapplication. Any repaired or replacement Software Product will be warranted for the remainder of the original warranty period or thirty (30) days, whichever is longer. Neither these remedies nor any product

support services offered by EMCO are available without proof of purchase from an authorized international source and may not be available from ECMO or its.

- (c) NO OTHER WARRANTIES. TO THE MAXIMUM EXTENT PERMITTED BY APPLICABLE LAW, AND EXCEPT FOR THE LIMITED WARRANTIES SET FORTH HEREIN, THE SOFTWARE AND DOCUMENTATION ARE PROVIDED "AS IS" AND ECMO AND ITS SUPPLIERS DISCLAIM ALL OTHER WARRANTIES AND CONDITIONS, EITHER EXPRESS OR IMPLIED, INCLUDING, BUT NOT LIMITED TO, IMPLIED WARRANTIES OF MERCHANTABILITY, FITNESS FOR A PARTICULAR PURPOSE, CONFORMANCE WITH DESCRIPTION, TITLE AND NON-INFRINGEMENT OF THIRD PARTY RIGHTS, AND THE PROVISION OF OR FAILURE TO PROVIDE SUPPORT SERVICES. THIS LIMITED WARRANTY GIVES YOU SPECIFIC LEGAL RIGHTS. YOU MAY HAVE OTHERS, WHICH VARY FROM JURISDICTION TO JURISDICTION.
 - (d) LIMITATION OF LIABILITY. TO THE MAXIMUM EXTENT PERMITTED BY APPLICABLE LAW, IN NO EVENT SHALL ECMO OR ITS SUPPLIERS BE LIABLE FOR ANY INDIRECT, INCIDENTAL, CONSEQUENTIAL, SPECIAL OR EXEMPLARY DAMAGES OR LOST PROFITS WHATSOEVER (INCLUDING, WITHOUT LIMITATION, DAMAGES FOR LOSS OF BUSINESS PROFITS, BUSINESS INTERRUPTION, LOSS OF BUSINESS INFORMATION, OR ANY OTHER PECUNIARY LOSS) ARISING OUT OF THE USE OR INABILITY TO USE THE SOFTWARE PRODUCT OR THE FAILURE TO PROVIDE SUPPORT SERVICES, EVEN IF ECMO HAS BEEN ADVISED OF THE POSSIBILITY OF SUCH DAMAGES. IN ANY CASE, ECMO'S CUMULATIVE AND ENTIRE LIABILITY TO YOU OR ANY OTHER PARTY FOR ANY LOSS OR DAMAGES RESULTING FROM ANY CLAIMS, DEMANDS OR ACTIONS ARISING OUT OF OR RELATING TO THIS AGREEMENT SHALL NOT EXCEED THE PURCHASE PRICE PAID FOR THIS LICENSE. BECAUSE SOME JURISDICTIONS DO NOT ALLOW THE EXCLUSION OR LIMITATION OF LIABILITY, THE ABOVE LIMITATIONS MAY NOT APPLY TO YOU.
7. GENERAL . These terms and conditions may not be modified, amended, canceled or in any way altered, nor may they be modified by custom and usage of trade or course of dealing, except by an instrument in writing and signed by a duly authorized officer of EMCO . These terms and conditions shall be construed and enforced in accordance with the laws of Iceland. Any action or proceeding brought by anyone arising out of or related to these terms and conditions shall be governed only by the law and procedures of Iceland in the City Court of Reykjavik. Should any term of these terms and conditions be declared void or unenforceable by any court of competent jurisdiction, such declaration shall have no effect on the remaining terms hereof. These terms and conditions are in the English language, and only the English language version hereof, regardless of the existence of other language translations of these terms and conditions, shall be controlling in all respects. The failure of either party to enforce any rights granted hereunder or to take action against the other party in the event of any breach hereunder shall not be deemed a waiver by that party as to subsequent enforcement of rights or subsequent actions in the event of future breaches. EMCO reserves the right at any time without liability or prior notice to change the features or characteristics of this Software Product, or its documentation and related materials, or future versions thereof. These terms and conditions constitute the complete and exclusive statement of the agreement between us which supersedes any proposal or prior agreement, oral or written, and any other communication between us relating to the subject matter of these terms and conditions.

Copyright (c) 2001-2002 EMCO. All rights reserved.

Should you have any questions concerning these terms and conditions, or if you desire to contact EMCO for any reason, please email to: support@emco.is . <http://emco.is> .

Index

- (All), 8
- (Blanks), 8
- (Custom...), 8
- (NonBlanks), 8
- adding
 - new machines, 21
- applying
 - filters, 23
- archiving
 - database, 27
- Auto Fetch, 9
- Auto Update, 9
- charting
 - scan tool results, 15
- charts
 - exporting, 15
 - exporting bitmap, 15
 - exporting Excel, 15
 - exporting HTML, 15
 - exporting text, 15
 - exporting XML, 15
- columns, 8
 - (All), 8
 - (Blanks), 8
 - (Custom...), 8
 - (NonBlanks), 8
 - using, 8
- command line, 18
- Compare Licenses, 39
- Configure Tools, 41
- contacting EMCO, 43
- creating
 - database, 25
 - database from archive, 28
- Custom Logon, 9
- Custom Scan Criteria, 37
- Custom Search Queries
 - Custom Scan Criteria, 37
- Customer Scan, 19
- database
 - archiving, 27
 - creating, 25
 - creating from archive, 28
 - merging, 26
 - opening, 26
 - saving, 25
- deleting
 - records, 12
- Disk Scanning, 33
- Disks, 19
- EMCO Network Inventory, 5
- Enumerate LAN, 17
- Enumerate LAN via Domain Name, 17
- Enumerate LAN via IP Name, 17
- EULA, 44
- Excel
 - exporting to, 30
- Excluded Application Titles, 41
- exporting
 - bitmap charts, 15
 - charts, 15
 - Excel, 30
 - Excel charts, 15
 - HTML charts, 15
 - text charts, 15
 - XML charts, 15
- Fetch, 20
- Fetch New Machines, 20
- Fetch New Machines via IP Range, 20
- fetching
 - LAN data, 20
- File Version Scanning, 32
- filters
 - applying to tab, 23
 - removing from tab, 24
- generating
 - Access file, 30
 - Excel file, 30
 - file, 29
 - HTML file, 29
 - JPEG file, 30
 - on-screen report, 29
 - PDF file, 29
 - RTF file, 29
 - text file, 29

- help, 6
 - using, 6
- Include Options, 9
- inserting
 - records, 11
- Installed Application Count, 36
- Installed Apps, 19
- introduction, 5
- LAN
 - fetching data, 20
 - saving data, 25
 - scanning, 17
 - updating data, 20
- license agreement, 44
- License Functions
 - Compare Licenses, 39
 - License Tracking, 38
- license tracking, 38
- Load Audit Data from Network Inventory Stub, 18
- machine data, 19
- Machines, 19
 - tab, 23
- machines
 - adding to scan, 21
 - removing from scan, 22
- Machines tab
 - applying filters, 23
 - removing filters, 24
- manual
 - using, 6
- Mappings, 19
- Merge using TimeStamp, 26
- merging
 - database, 26
 - RemoteAudit 2.0 database, 26
 - scan tool results, 14
- modifying
 - records, 11
- Multi-Row data, 9
- opening
 - database, 26
 - scan tool results, 13
- Options
 - Configure Tools, 41
 - Excluded Application Titles, 41
- options, 9
 - Auto Fetch, 9
 - Auto Update, 9
 - Custom Logon, 9
 - Include Options, 9
 - Multi-Row data, 9
 - setting, 9
- Overwrite Existing, 26
- ping, 24
- pinging
 - machines, 24
- Printers, 19
- Processors, 19
- Program Folders, 19
- Re-Enumerate Selected, 17
- records, 11
 - deleting, 12
 - inserting, 11
 - modifying, 11
 - using, 11
- Registry Scanning, 35
- Registry Value Lookup, 34
- RemoteAudit 2.0
 - merging database, 26
- removing
 - filters, 24
 - new machines, 22
- reports, 29
 - generating Access, 30
 - generating Excel, 30
 - generating file, 29
 - generating HTML, 29
 - generating JPEG, 30
 - generating on-screen, 29
 - generating PDF, 29
 - generating RTF, 29
 - generating text, 29
- saving
 - database, 25
 - LAN data, 25
 - scan tool results, 13
- scan tools, 13, 32
 - charting, 15
 - merging, 14
 - opening, 13
 - saving results, 13
- scanning
 - LAN, 17
- Security Scanning, 32
- setting
 - options, 9
- Shares, 19
- Skip On Collision, 26
- Startup, 19
- tabs, 19
 - Customer Scan, 19

- Disks, 19
- Installed Apps, 19
- Machines, 19, 23
- Mappings, 19
- Printers, 19
- Processors, 19
- Program Folders, 19
- Shares, 19
- Startup, 19
- Terminate
 - Hard, 16
 - Normal, 16
- Tip of the Day, 6
- Tool Functions
 - Disk Scanning, 33
 - File Version Scanning, 32
 - Installed Application Count, 36
 - menu, 13
 - Registry Scanning, 35
 - Registry Value Lookup, 34
 - Security Scanning, 32
- Track Licenses, 38
- troubleshooting, 6
- Tutorials, 6

- Update, 20, 21
- Update Custom, 21
- Update Scan Age >30 days, 21
- Update Selected, 21
- updating
 - LAN data, 20
 - scan data, 21
- using
 - columns, 8
 - help, 6
 - manual, 6
 - records, 11

- Wizards, 6